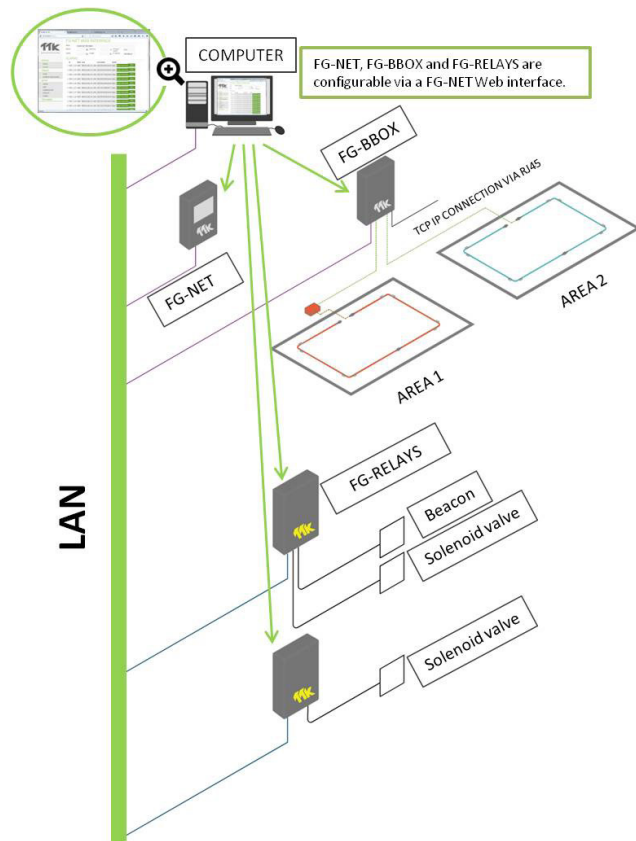




Introduction

- The FG-NET digital unit can be fully configured via its touch screen. It can be also viewed, configured and controlled remotely on a connected computer via FG-NET Web Interface.
- The FG-BBOX and FG-RELAYS are external devices of FG-NET. They are monitored by FG-NET via a standard Ethernet network. They can be configured and their real-time status can be viewed via the interface.

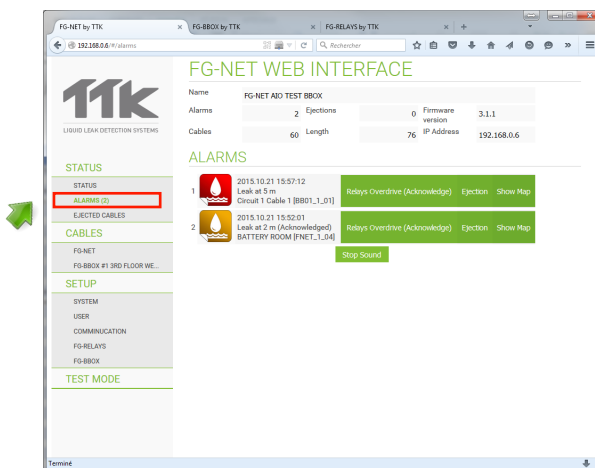
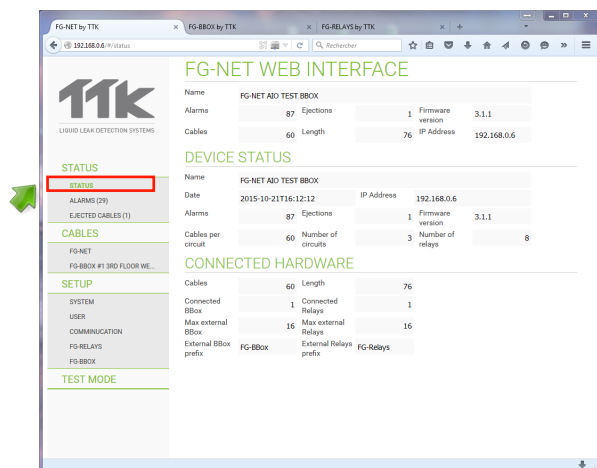


Connection diagram of FG-NET, FG-BBOX, FG-RELAYS and a PC in a Network

1 'STATUS' Menu

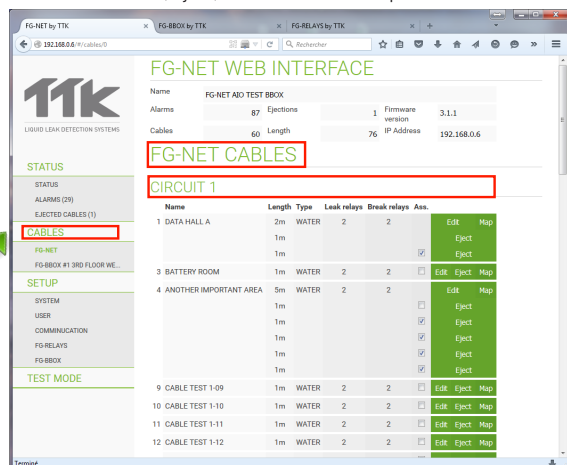
- FG-NET web interface consists of four main menus: Status, Cables, Setup and Test Mode.
- Menu **'Status' > 'Status'**: can view information about the system and installation. For example, the name of the panel, the number of connected cables, the number of alarms, the total length detectors, firmware version and IP addresses of the panel.

- Menu **'Status' > 'Alarms'**: allows to see the current alarms list and to take quick actions related to these alarms.
- Detailed information about alarms is shown in this menu: alarming date and time, type of fault (leak or cable break), alarming cable ID (FNET_circuit n°, cable n°). User can take different actions such as 'aware alarm', 'acknowledge alarm', 'stop sound' or 'ejection'.

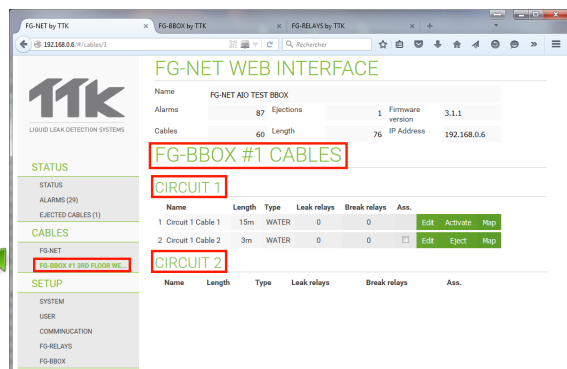


2 'CABLES' Menu

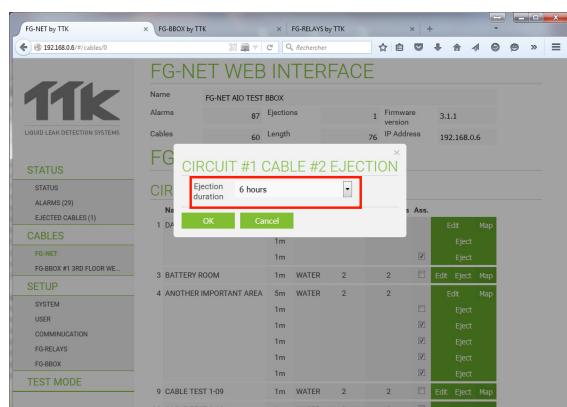
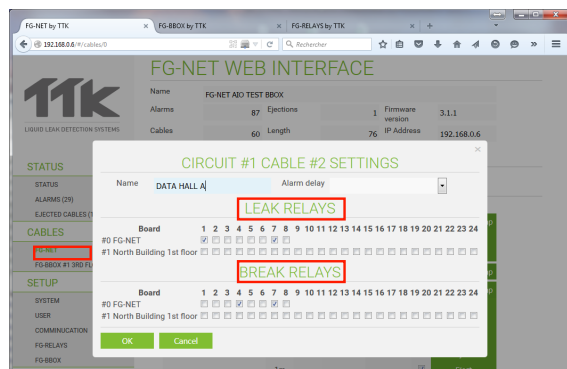
- Menu **'Cables' > 'FG-NET'**: This menu lists the installed cables on three circuits on each FG-NET. Name and length of each cable, as well as the related leak and cable break relays are listed. User can configure each cable (associate, eject, edit or view it on map) via buttons.



- Menu **'Cables' > 'FG-BBOX'**: When FG-BBOX are connected to FG-NET, the list of cables on every FG-BBOX will be shown under this sub-menu 'FG-BBOX #n' and name of BBOX.

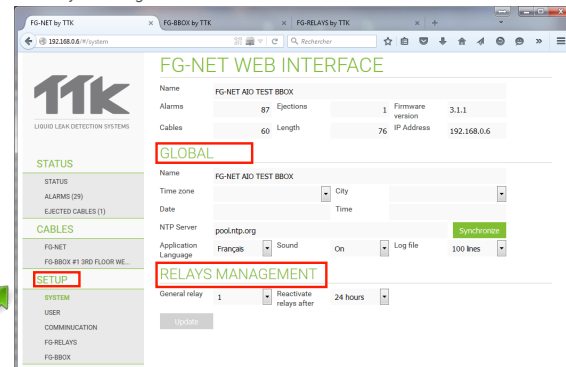


- Menu **'Cables' > 'FG-BBOX'**: rename cable, configure both internal (on FG-NET) and external (on FG-RELAYS) relays, temporisation, can be done under this menu.

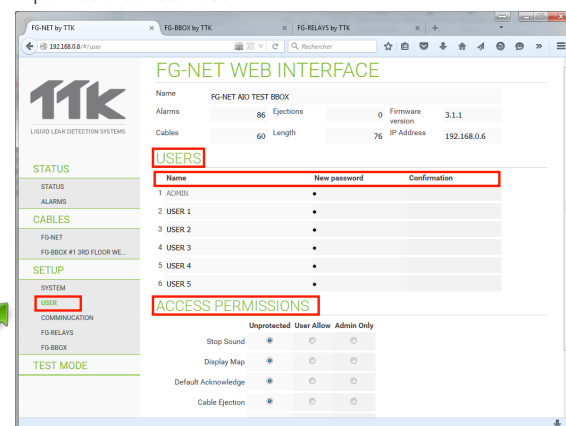


3 'SETUP' Menu

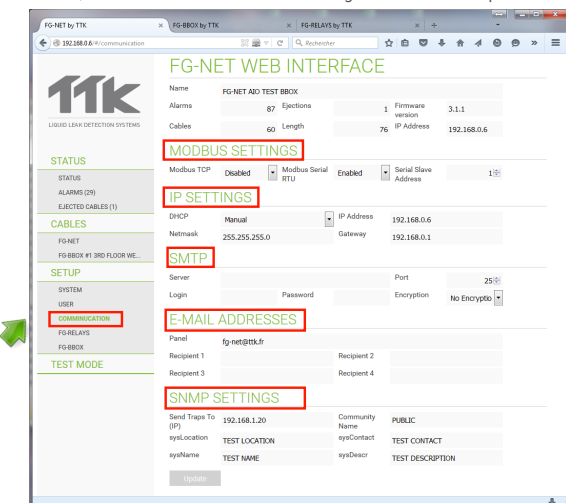
- Menu **'Setup'**: This menu is a replication of the tabs presented in the configuration menu of the FG-NET panel. It includes 'System', 'User', 'FG-RELAYS' and 'FG-BBOX'.
- Menu **'Setup' > 'System'**: It contains global information of the panel and relays management.



- Menu **'Setup' > 'User'**: This menu allows configuring passwords and access permissions of each user.



- Menu **'Setup' > 'Communication'**: This menu allows setting up Modbus, IP, SMTP, e-mail address and SNMP settings on the FG-NET panel.



- Menu **'Setup' > 'FG-RELAYS' / 'FG-BBOX'**: The real-time status of every FG-RELAYS / FG-BBOX can be viewed and configured in this menu.

